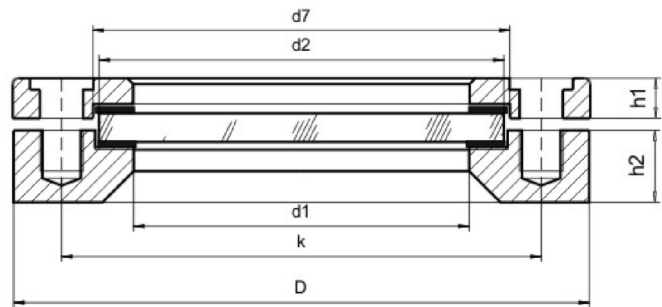


Sight glass fitting, circular, for non-pressurized vessels



For

- observation of the interior of containers, boilers, silos agitators, etc.

View

- 80 to 225 mm

Operating conditions

- unpressurized

Betriebstemperatur

- 150°C for Sodalime glass, DIN8902
- 280°C for borosilicate glass, DIN7080

Certificates

- test certificate EN10204-3.1B

Kombinationsmöglichkeit

- Can be combined with sight glass lights – also for use in potentially explosive areas. The cover flanges can be fitted with the appropriate additional threaded holes for attaching such lights

Advantages

- smaller outer diameter and therefore smaller container cutout
- lower weight
- easier to clean
- lower cost
- After welding in the base flange into the vessel wall, gaskets (glass sight glass disc and mating flange are carefully laid and bolted together with bolts.
- Tighten progressively on a diametric cross basis with socket spanner.

Assembly

Materials

Base flange	1.4571
Gaskets	Klingsil C-4400, silicone, PTFE or others
Sight glass	Borosilicate glass DIN7081 to 280°C Sodalime DIN8902 to 150°C
Cover flange	1.4571 or other
Bolts	stainless steel A2-70

Size	NW	View	Sight glass		Flange				Bolts		Gasket	
	DN	d1	d2	s	D	k	h1	h2	Anzahl	Gewinde	d1	d7
1	50	80	100	10	140	120	10	15	4	M6	80	102
2	80	100	125	10	165	145	10	15	8	M6	100	127
3	100	125	150	10	190	170	10	15	8	M6	125	152
4	125	150	175	10	215	195	10	15	8	M6	150	177
5	150	175	200	10	240	220	10	15	8	M6	175	202
6	200	225	250	10	290	270	10	15	8	M6	225	252
7	300	300	325	15	370	345	15	20	12	M8	300	327
8	400	400	425	15	470	445	15	30	16	M8	402	427