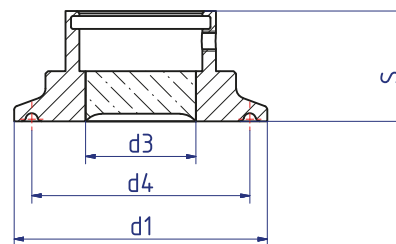
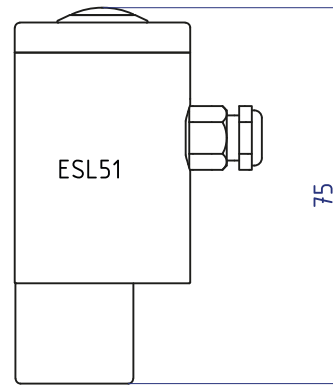


**METACLAMP® Sight glass for clamp fitting for luminaire USL01 / ES51**



**Applications**

- Compact sanitary combination of miniature stainless steel Lumiglas ESL51 light with the proven Metaclamp sanitary mounting system.

**Metaclamp Materials**

- Duplex Stainless Steel (1.4462)
- Hastelloy C-22 (2.4602)
- Hastelloy C-4 (2.4610)

**Material certificates**

- Certificate of Conformity to EN 10204-3.1 or 3.2 at a surcharge

**Operating conditions**

- Pressure: -1 to 16 bar
- Temperature: See table

**Ring materials      Temperature (TS)**

1.4462	-30 °C to +280 °C
2.4602	-60 °C to +300 °C
2.4610	-60 °C to +300 °C

**Approvals and technical data**

- Pressure Equipment Directive 97/23/EG 02/98, Module H (DIN/EN/ISO 9001)
- AD2000 Standards W0/TRD 100
- Sight glass fused to metal conforming to DIN 7079
- Materials to VdTÜV specifications and the DIN/EN designated standards
- Glass: borosilicate to DIN 7080 / DIN 7079

**Advantages**

- Miniature space-saving design
- Suitable for food processing (A3 Standard)
- Dust and water-jet resistant (IP65) even during external washdown
- Fast and simple installation with no risk of breakage
- Very high resistance to impact
- Sight glass resistant to catastrophic failure

**Light Mini-Lumiglas stainless steel**

- Operating voltage: 24 V AC/DC – 2.5 W
- Colour temperature: 5000 K
- Luminous flux: 180 lm
- Reflected beam angle: 18°
- Housing: stainless steel DIN 1.4301 or similar
- Power cable: 3 m
- Maximum admissible ambient temperature at (cable entry) the cable gland: 50 °C
- Protection class: dust-tight and water-jet resistant, IP 65 acc. to EN 60 529 / DIN VDE 0470, Part 1

Nominal size			d1	d3	d4	S	Max. operating pressure [bar]
DIN	ISO	Inch					
–	8/10	½", ¾"	25	10	18,0	28	16
10/15/20	–	–	34	14	27,5	28	16
25/32/40	15/20/25	1", 1½"	50,5	22	43,5	22	16
50*	32/40*	2" *	64	23	56,5	22	16

\* Sight glass light: Type USL33 recommended